

OVERSIZED DOCUMENT  
SCANNED IN PARTS DUE TO SIZE

New Jersey State Archives  
Early Land Records

WJ Loose Records : 1762 - Smith, Daniel (OV-B) (63631) (PWESJ004)

TO: Daniel Smith

SURVEY AND MAP. 307 acres. Between Bulls Creek and Cakespruto Branches of Little Egg Harbor River; on the westerly side of Mullicans Road; about a half a mile south of Pipen Hill; Little Egg Harbor Township; Burlington County

Surveyed November 19, 1761 and March 26, 1762

DATE: 26 Mar 1762

9/11/2023

1762 Smith, Daniel

Little Egg Harbor Township, Burlington County



Little Egg Harbor Township, Burlington County

307 acres

63631  
March 26, 1762  
Survey + map



<sup>N<sup>o</sup> 6</sup>  
Daw Smith, 307 <sup>10</sup>/<sub>12</sub>

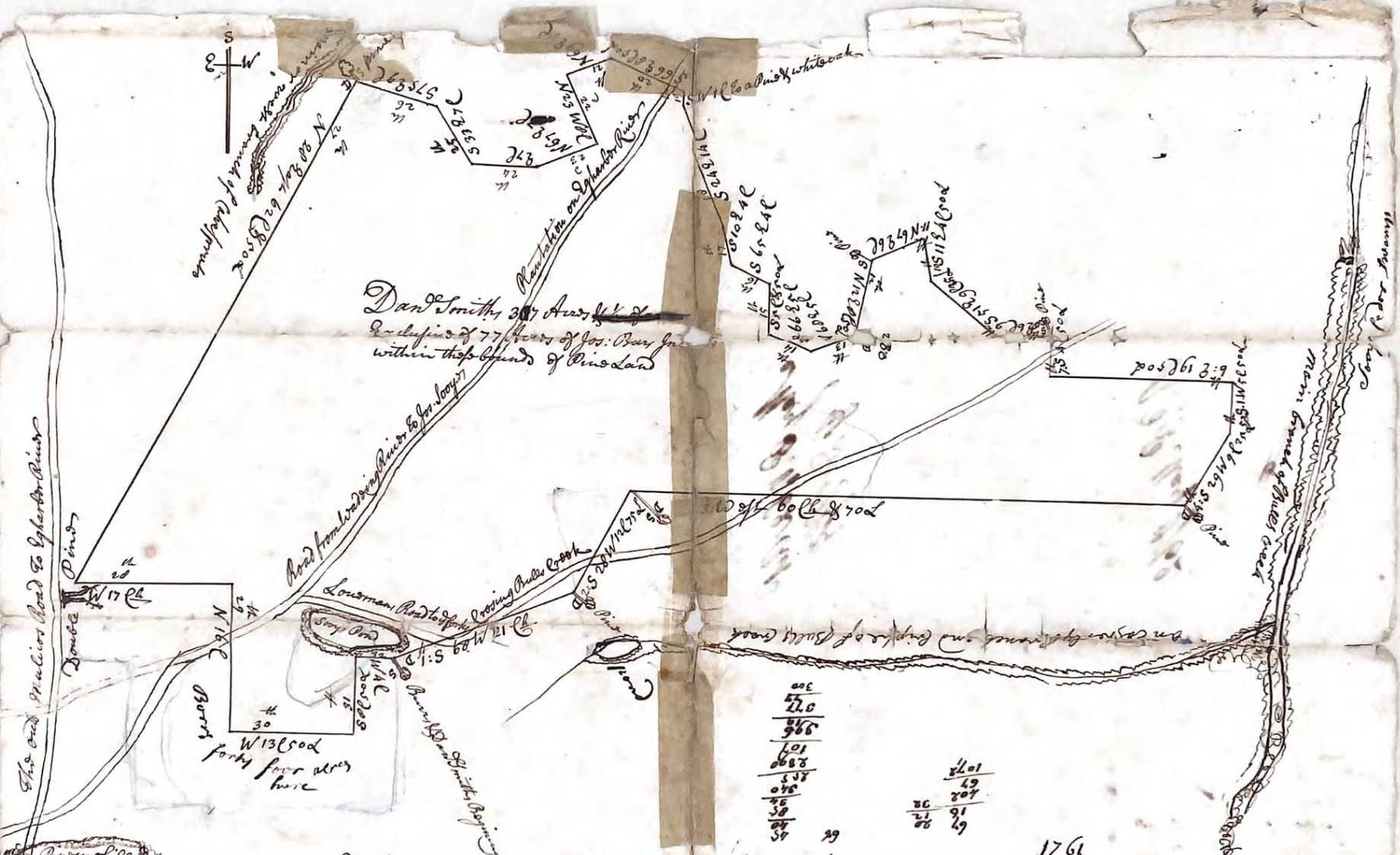
May 8. 1862 Rec<sup>d</sup>  
J. D. S. J. J.

Rec<sup>d</sup> 3 May 1862









This end Mulier Road to Egg Harbor River

Dan Smith's 307 Acres  
 including of 77 acres of Jos. Burr's land  
 within the bounds of Pine Land

ends of ground of (old) Pine  
 205 23 24 25 26 27 28 29 30 31 32 33 34 35 36 37 38 39 40 41 42 43 44 45 46 47 48 49 50 51 52 53 54 55 56 57 58 59 60 61 62 63 64 65 66 67 68 69 70 71 72 73 74 75 76 77 78 79 80 81 82 83 84 85 86 87 88 89 90 91 92 93 94 95 96 97 98 99 100

road from Washington to the log  
 Lousman Road to fork crossing Bull's Creek  
 Main branch of Bull's Creek  
 W 135 00  
 forty four acres  
 here

200  
 220  
 240  
 260  
 280  
 300  
 320  
 340  
 360  
 380  
 400  
 420  
 440  
 460  
 480  
 500  
 520  
 540  
 560  
 580  
 600  
 620  
 640  
 660  
 680  
 700  
 720  
 740  
 760  
 780  
 800  
 820  
 840  
 860  
 880  
 900  
 920  
 940  
 960  
 980  
 1000

2401  
 49  
 207  
 19  
 20  
 21  
 22  
 23  
 24  
 25  
 26  
 27  
 28  
 29  
 30  
 31  
 32  
 33  
 34  
 35  
 36  
 37  
 38  
 39  
 40  
 41  
 42  
 43  
 44  
 45  
 46  
 47  
 48  
 49  
 50  
 51  
 52  
 53  
 54  
 55  
 56  
 57  
 58  
 59  
 60  
 61  
 62  
 63  
 64  
 65  
 66  
 67  
 68  
 69  
 70  
 71  
 72  
 73  
 74  
 75  
 76  
 77  
 78  
 79  
 80  
 81  
 82  
 83  
 84  
 85  
 86  
 87  
 88  
 89  
 90  
 91  
 92  
 93  
 94  
 95  
 96  
 97  
 98  
 99  
 100

Little Egg Harbor in 4<sup>th</sup> County of Burlington Nov<sup>r</sup> of 19<sup>th</sup> and march of 26<sup>th</sup> 1762

To. In pursuance of your order to me Directed bearing Date of 5<sup>th</sup> day of may 1761 ordering me to Survey unto Danl. Smith of Burlington of full quantity of one thousand acres of Land in or on



The old Malicos Road to Eggharbor River



Little Eggharboor in of County of Burlington Nubr of 19th and march of 26th 1762

300	201
570	49
996	207
101	91
888	20
855	
940	
38	
54	



57 29 76 28

Little Egg Harbor in of County of Burlington Novr of 19th and more of 26th 1762

To. In pursuance of your Order to me Directed bearing Date of 5th Day of May 1761 ordering me to Survey unto Saml Smith of Burlington of full Quantitie of one Thousand Acres of Land in or on any Unappropriated Land in of western Division of New Jersey I have therefore Surveyed of above plan to of to Saml Smith in pine Land Lying Situated in that part of Little Egg Harbor that Lyeth Between Bully Creek and Capeports Branches of Little Egg Harbor River Beginning at apine mark 12 back and 4 Blows Sth D's being a corner of former Survey made to Joseph Burr of 44 acres Standing about 3<sup>1</sup>/<sub>2</sub> Westward of apine called Sooy's pond about one Quarter of a mile Southward of pipen Hill and Extends from to Burr's corner (1) South Sixty Eight Deg. West by of Edge of low Land of an Eastward Branch of Bully Creek Twenty one (1<sup>1</sup>/<sub>2</sub>) to a forked pine Near apine and Lovemans Road to of fork (2) Thence (2<sup>1</sup>/<sub>2</sub>) South Twenty Eight Deg. West crossing to Road Twelve (1<sup>1</sup>/<sub>2</sub>) and Twenty five Links to apine D's then (3<sup>1</sup>/<sub>2</sub>) West Crossing to Lovemans Road ~~about 1/2 mile~~ Fifty (1<sup>1</sup>/<sub>2</sub>) and Seventy Links to apine on right of Sooy's pond Swamp then D. then (4<sup>1</sup>/<sub>2</sub>) South Twenty Nine Deg. West Nine (1<sup>1</sup>/<sub>2</sub>) and Twenty five Links to apine on of Rising ground from to Cedar Swamp then (5<sup>1</sup>/<sub>2</sub>) South one Deg. West five (1<sup>1</sup>/<sub>2</sub>) and fifty Links to a small pine Between 2 small hills then (6<sup>1</sup>/<sub>2</sub>) Due East Nineteen (1<sup>1</sup>/<sub>2</sub>) and fifty Links to a white oak then (7<sup>1</sup>/<sub>2</sub>) South four (1<sup>1</sup>/<sub>2</sub>) fifty Links to apine then (8<sup>1</sup>/<sub>2</sub>) Due East Six (1<sup>1</sup>/<sub>2</sub>) to a small pine on side hill then (9<sup>1</sup>/<sub>2</sub>) South fifty one Deg. East Nineteen (1<sup>1</sup>/<sub>2</sub>) and Twenty five Links to a small pine about 50 Links from a black oak mark after corner then (10<sup>1</sup>/<sub>2</sub>) South Eleven Deg. East four (1<sup>1</sup>/<sub>2</sub>) and fifty Links to a black oak then (11<sup>1</sup>/<sub>2</sub>) North Sixty seven Deg. East Six (1<sup>1</sup>/<sub>2</sub>) to apine then (12<sup>1</sup>/<sub>2</sub>) North twelve Deg. East Eight (1<sup>1</sup>/<sub>2</sub>) to fifty Links to two black oaks then (13<sup>1</sup>/<sub>2</sub>) North Sixty Eight Deg. East five (1<sup>1</sup>/<sub>2</sub>) to apine then (14<sup>1</sup>/<sub>2</sub>) South Sixty six Deg. East five (1<sup>1</sup>/<sub>2</sub>) to apine then (15<sup>1</sup>/<sub>2</sub>) South five (1<sup>1</sup>/<sub>2</sub>) & fifty Links to a small pine then (16<sup>1</sup>/<sub>2</sub>) South Sixty five Deg. East four (1<sup>1</sup>/<sub>2</sub>) to a forked pine in low Land then (17<sup>1</sup>/<sub>2</sub>) South Ten Deg. East four (1<sup>1</sup>/<sub>2</sub>) to a small pine then (18<sup>1</sup>/<sub>2</sub>) South Twenty four Deg. East fourteen (1<sup>1</sup>/<sub>2</sub>) to apine then (19<sup>1</sup>/<sub>2</sub>) South three Deg. West one (1<sup>1</sup>/<sub>2</sub>) to apine and white oak about one Chain Westward of Sooy's Road to pipen Hill Near a side the (20<sup>1</sup>/<sub>2</sub>) South Sixty Six Deg. East Crossing Sooy's Road Eight Chains (1<sup>1</sup>/<sub>2</sub>) fifty Links to pine then (21<sup>1</sup>/<sub>2</sub>) North Sixty Nine Deg. East five (1<sup>1</sup>/<sub>2</sub>) to a stake by a small pine then (22<sup>1</sup>/<sub>2</sub>) North Twenty three Deg. West Eight (1<sup>1</sup>/<sub>2</sub>) to apine then (23<sup>1</sup>/<sub>2</sub>) North Sixty seven Deg. East seven (1<sup>1</sup>/<sub>2</sub>) to apine then (24<sup>1</sup>/<sub>2</sub>) Due East seven (1<sup>1</sup>/<sub>2</sub>) to apine by apine then (25<sup>1</sup>/<sub>2</sub>) South Thirty three Deg. East seven (1<sup>1</sup>/<sub>2</sub>) to apine then (26<sup>1</sup>/<sub>2</sub>) South Seventy five Deg. East nine (1<sup>1</sup>/<sub>2</sub>) to apine Near of Westward side of of main branch of Capeports Lick D's and from thence (27<sup>1</sup>/<sub>2</sub>) North Twenty eight Deg. East Sixty two (1<sup>1</sup>/<sub>2</sub>) and fifty Links to a post corner to Sooy's forty four acres about 2 chains Southward from a Double pine standing on of Westward side of Mallicans Road about half a mile South of pipen Hill then (28<sup>1</sup>/<sub>2</sub>) along to Burr's line West Seventeen (1<sup>1</sup>/<sub>2</sub>) to Burr's post corner then (29<sup>1</sup>/<sub>2</sub>) continuing along in Burr's line North sixteen (1<sup>1</sup>/<sub>2</sub>) to another of Burr's corners then (30<sup>1</sup>/<sub>2</sub>) yet in Burr's line West Thirteen (1<sup>1</sup>/<sub>2</sub>) fifty Links to Burr's corner then (31<sup>1</sup>/<sub>2</sub>) South Eight (1<sup>1</sup>/<sub>2</sub>) and fifty Links to Burr's corner then (32<sup>1</sup>/<sub>2</sub>) once more in Burr's line West four (1<sup>1</sup>/<sub>2</sub>) to of Beginning pine first mentiond Near of pond Survey for three Hundred and ~~seven acres~~ <sup>for Acres</sup> besides allowance Exclusive of 77 acres in of above plan Land to of Burr's Survey p<sup>o</sup> one

To Saml Smith Junr  
Surveyor

John Leck Dep



Pipinghill  
Little Egg Harbor in 4<sup>th</sup> County of Burlington Nov<sup>r</sup> 19<sup>th</sup> and march 26<sup>th</sup> 1762

To In pursuance of your Order to me Directed bearing Date 5<sup>th</sup> Day of May 1761 ordering  
me to Survey unto Sam<sup>l</sup> Smith of Burlington 4<sup>th</sup> full quantity of one thousand acres of Land in or on  
any Unappropriated Land in 4<sup>th</sup> western Division of New Jersey I have therefore Surveyed 4<sup>th</sup> above plan to 4<sup>th</sup>  
Do Sam<sup>l</sup> Smith in pine Land lying Situated in that part of Little Egg Harbor that lyeth Between  
Bully Creek and Cakespruts Branches of Little Egg Harbor River Beginning at a pine mark 12 back and 4 Blows  
Letter D's being a corner of a former Survey made to Joseph Burr of 44 acres Standing about 3 Ch<sup>s</sup> westward of a pond (called  
Sooy's pond about one Quarter of a mile Southward of piper Hill and Extend from Do Burr's corner 1<sup>st</sup> South Fifty  
Eight Deg<sup>s</sup> west by 4<sup>th</sup> Edge of low Land of an Easterly branch of Bulls Creek Twenty one Ch<sup>s</sup> to a crooked body pine  
Near a pond and Lovemans Road to 4<sup>th</sup> fork Letter D. Thence (2<sup>ly</sup>) South Twenty Eight Deg<sup>s</sup> west crossing Do Road Twelve Ch<sup>s</sup>  
and twenty five links to a pine D's then (3<sup>ly</sup>) west crossing Do Lovemans Road ~~back again~~ Sixty Ch<sup>s</sup> and seventy links to a pine  
in sight of Sooy's Pond Swamp Letter D. Thence (4<sup>ly</sup>) South Twenty Nine Deg<sup>s</sup> west Nine Ch<sup>s</sup> and twenty five links to a pine on 4<sup>th</sup>  
Rising ground from Do Cakes Swamp then (5<sup>th</sup>) South one Deg<sup>s</sup> west five Ch<sup>s</sup> and fifty links to a small pine between 2 small hills  
then (6<sup>th</sup>) Due East Nineteen Ch<sup>s</sup> and fifty links to a white oak then (7<sup>th</sup>) South four Ch<sup>s</sup> fifty links to a pine Letter S  
then (8<sup>th</sup>) Due East Six Ch<sup>s</sup> to a small pine on side hill thence (9<sup>th</sup>) South fifty one Deg<sup>s</sup> East Nine Ch<sup>s</sup> and twenty five  
links to a small pine about 50 links from a black oak mark a fair corner then (10<sup>th</sup>) South Eleven Deg<sup>s</sup> East  
four Ch<sup>s</sup> and fifty links to a black oak then (11<sup>th</sup>) North sixty seven Deg<sup>s</sup> East Six Ch<sup>s</sup> to a pine Letter S then  
(12<sup>th</sup>) North twelve Deg<sup>s</sup> East Eight Ch<sup>s</sup> & fifty links to two black oak then (13<sup>th</sup>) North sixty eight Deg<sup>s</sup> East five  
Ch<sup>s</sup> to a pine then (14<sup>th</sup>) South sixty six Deg<sup>s</sup> East five Ch<sup>s</sup> to a pine then (15<sup>th</sup>) South five Ch<sup>s</sup> & fifty links to  
a small pine then (16<sup>th</sup>) South sixty five Deg<sup>s</sup> East four Ch<sup>s</sup> to a forked pine in low land then (17<sup>th</sup>) South  
Ten Deg<sup>s</sup> East four Ch<sup>s</sup> to a small pine then (18<sup>th</sup>) South twenty four Deg<sup>s</sup> East fourteen Ch<sup>s</sup> to a pine then (19<sup>th</sup>)  
South three Deg<sup>s</sup> west one Ch<sup>s</sup> to a pine and white oak about one chain westward of Sooy's Road to piper  
Hill Near a slide then (20<sup>th</sup>) South sixty six Deg<sup>s</sup> East crossing Sooy's Road Eight chains Ch<sup>s</sup> fifty links to pine  
then (21<sup>st</sup>) North sixty Nine Deg<sup>s</sup> East five Ch<sup>s</sup> to a stake by a mark pine then (22<sup>nd</sup>) North twenty three  
Deg<sup>s</sup> west Eight Ch<sup>s</sup> to a pine then (23<sup>rd</sup>) North sixty seven Deg<sup>s</sup> East seven Ch<sup>s</sup> to a pine then (24<sup>th</sup>) Due  
East seven Ch<sup>s</sup> to a pine by a pond then (25<sup>th</sup>) South thirty three Deg<sup>s</sup> East seven Ch<sup>s</sup> to a pine then (26<sup>th</sup>) South  
seventy five Deg<sup>s</sup> East nine Ch<sup>s</sup> to a pine Near 4<sup>th</sup> westerly side of 4<sup>th</sup> main branch of Cakespruts Letter  
D's and from thence (27<sup>th</sup>) North twenty eight Deg<sup>s</sup> East sixty two Ch<sup>s</sup> and fifty links to a post corner  
to Do Burr forty four acres about 2 chains Southwestward from a Double pine standing on 4<sup>th</sup> westerly side  
of Mallicans Road about half a mile South of piper Hill then (28<sup>th</sup>) along Do Burr's line west seventeen Ch<sup>s</sup>  
to Burr's post corner then (29<sup>th</sup>) continuing along in Burr's line North sixteen Ch<sup>s</sup> to another of Burr's corners  
then (30<sup>th</sup>) yet in Burr's line west thirteen Ch<sup>s</sup> fifty links to Burr's corner then (31<sup>st</sup>) South eight Ch<sup>s</sup> and fifty links  
to Burr's corner then (32<sup>nd</sup>) once more in Burr's line west four Ch<sup>s</sup> to 4<sup>th</sup> Beginning pine first mentioned Near 4<sup>th</sup> pond  
Survey for three Hundred and ~~seven~~ <sup>for Roads</sup> ~~acres~~ Beside allowance Exclusive of 77 acres in 4<sup>th</sup> above plan Sur<sup>d</sup>. to Do Burr for  
Survey p<sup>r</sup> me

To Sam<sup>l</sup> Smith Jun<sup>r</sup>  
Surveyor Gen<sup>l</sup>

John Leck Dep<sup>y</sup>